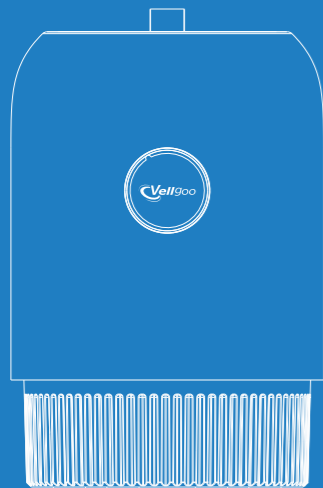




USER MANUAL DEHUMIDIFIER

Model: DryBox 200 / DryBox 200s



Questions or Concerns?

Please contact us at service@vellgoo.com.

Thank you for purchasing
DEHUMIDIFIER BY VELLGOO!

Please be sure to read the entirety of this user manual
carefully before use of the product.

SPECIFICATIONS

Model	DryBox 200 (Without battery style)	DryBox 200s (With battery style)
Size	6.14*5.74*8.41inch(15.6*14.57*21.35cm)	
Weight	1.98lb (0.9kg)	2.65lb (1.2kg)
Operating Temperature	5°C-50°C(41°F-122°F)	
Water tank capacity	22.66 oz / 670mL	
Input	DC 9V 2.5A	
Rated Power	23w	When only charging and not turning on, the power is 8w, while charging and turning on, the power is 30w
Moisture removal (80.6°F, 60% RH)	4.46 oz / Day (132mL / Day)	1.62 oz / Day (48mL / Day)
Moisture removal (86°F, 80% RH)	8.11 oz / Day (240mL / Day)	3.08 oz / Day (91.2mL / Day)
Noise Level	<30dB	
Suggested Range	< 162 ft² / 15 m²	

PACKAGE CONTENTS

1 x Dehumidifier

1 x User Manual

SAFETY INFORMATION

Household use only

- **Do not** exceed the rating of the power outlet or connected device.
- **Do not** modify the power cord length or share the outlet with other appliances.
- **Do not** use the dehumidifier near flammable gas or combustibles, such as gasoline, benzene, thinner, etc.
- If water enters the dehumidifier, please turn off the dehumidifier and disconnect the power, contact customer service at service@vellgoo.com to avoid danger.

CAUTION

- This dehumidifier can only be used by children 8 years or older and persons with reduced physical, sensory or mental capabilities or lack of experience and knowledge with supervision or instruction concerning the use of the dehumidifier. Cleaning and user maintenance shall not be done by children without supervision.
- If you suspect the dehumidifier or the supply cord has been damaged, please contact Vellgoo Customer Service at service@vellgoo.com.

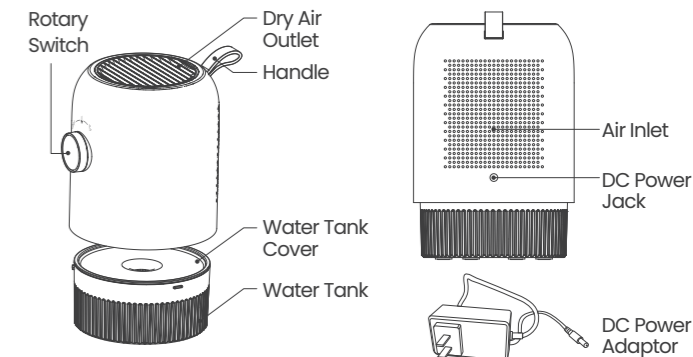
PARTS DESCRIPTION

Rotary Switch

Left side of rotary switch: Off Button.

Middle side of rotary switch: On Button, LED light is blue.

Right side of the rotary switch: Sleep mode, LED light is off.



OPERATION

USING TIPS

- 1/ Remove the power adapter from the box and attach it to both the dehumidifier and socket.
- 2/ Switch the dehumidifier ON using the Rotary switch. The blue LED will illuminate and you should feel a light breeze blowing out of the dry air outlet.
- 3/ Switch OFF, rotary the OFF switch again.

SMART FUNCTIONS

• Standby Mode

Plug in the power supply, the blue light will be on for 1 second, and it will enter the standby mode.

• Sleep Mode

Turn the rotary switch to the right, and the LED light is off at this time.

• Auto Shut Off

When the water tank is full, the dehumidifier will automatically shut off.

• Charging function (Only applicable to model with battery)

Standby state | When charging: LED light is green; when fully charged: LED light is off.

Dehumidification state | The light is blue, and no charging prompt.

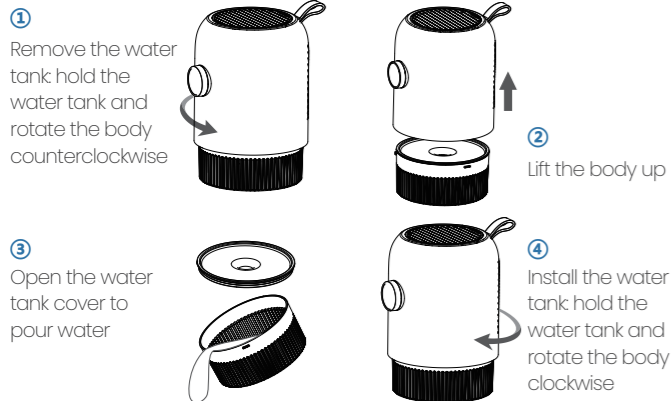
Sleep state | LED light is off, no charging prompt.

• Water Tank Full Indicator Light

The LED light will light in orange when the water tank is ready to be emptied.

ABOUT WATER TANK

*The capacity of dehumidification varies according to the environment.



CARE & MAINTENANCE

CLEANING

- Turn the dehumidifier off and remove the plug.
- Clean the dehumidifier with water and mild detergent.
- **Do not** use bleach or abrasives.

STORAGE

- Store the dehumidifier when it will not be used for a long time.
- Store the dehumidifier upright in a dry, well-ventilated place.
- Ensure the dehumidifier's rotary switch is OFF when the unit is not in use.
- Please keep the dehumidifier dry and make sure that the water in the water tank is empty, when not using the equipment.

TROUBLESHOOTING

- 1/ Dehumidifier does not work.**
- Check whether the power plug is properly inserted.
 - Check the house fuse or circuit breaker box.
 - Water tank is full.
- 2/ Dehumidifier does not dry the air as it should.**
- Make sure allow enough time to remove the moisture.
 - Make sure all doors, windows and other openings are securely closed.
 - There is a kerosene heater or something giving off water vapor in the room.
- 3/ Water on floor/The dehumidifier makes a loud noise when operating.**
- The dehumidifier was placed on uneven floor.
- 4/ After the dehumidifier is energized, the water-full light is on (orange light).**
- Check if the water tank is full.
- * Contact Customer Service if dehumidifier operates abnormally or does not operate, and the solutions above are not useful. Do not try to take apart or repair the dehumidifier by yourself.

WARRANTY INFORMATION

THIS WARRANTY DOES NOT APPLY TO THE FOLLOWING

- Damage in return transit.
- Improper or inadequate maintenance.
- Unsupervised use by children under 18 years of age.
- Damage resulted from natural disaster, fire, poison and moisture.

- Damage due to abuse, accident, alteration, misuse, tampering, or vandalism.
- 2nd hand purchase or purchase from non-authorized seller/distributor.

EXTEND YOUR WARRANTY BY 1 YEAR

Register your product at www.Vellgoo.com warranty to extend your 1-year warranty by an additional year.

Please fill out all required fields and include your order ID, place of purchase and SN code (at the rear of the product).

DEFECTIVE PRODUCTS & RETURNS

If you discover your product is defective within the specified warranty period, please contact Customer Support via service@vellgoo.com with a copy of your invoice and order ID. Do not dispose of your product before contacting us. Once our Customer Support Team has approved your request, please return the product with a copy of the invoice and order ID.

*Please do not return your product before contacting our Vellgoo customer service team.

Product Name	Dehumidifier
Model	DryBox 200 / DryBox 200s
Default Warranty Period	1 Year
For your own reference, we strongly recommend that you record your order ID, SN code.	
Order ID	
SN code	

All rights reserved, Vellgoo.



/vellgootech



/Vellgoo



/vellgoo



/Vellgoo



/vellgoo.com



service@vellgoo.com